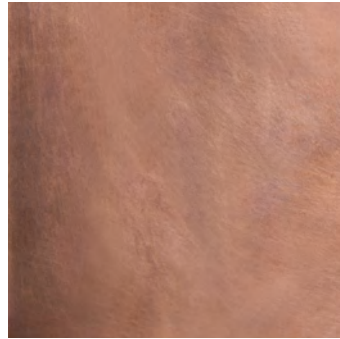


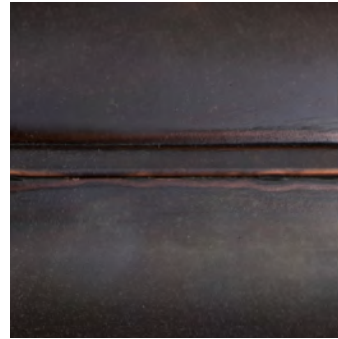
METAL FINISH SELECTIONS



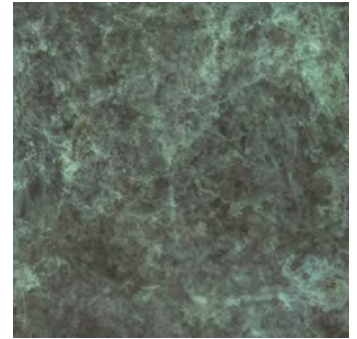
AGED TIN



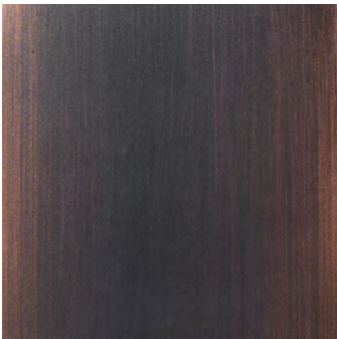
NATURAL COPPER



BRONZED COPPER



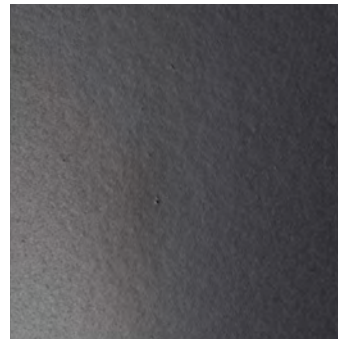
OXIDIZED COPPER



BRUSHED BRONZED COPPER



LEADED COPPER



BLACK LACQUER



BRONZE LACQUER



WHITE TOLE



YELLOW GOLD LEAF



WHITE GOLD LEAF

PAINT SELECTIONS



FINISH SELECTIONS

All Scofield metal finishes are hand applied and have natural variation inherent to the process.

AGED TIN

A rich, variegated black-brown finish with light texture is applied to a natural tin base and sealed with hand applied wax. Suitable for interior use only. CARE: Gently wipe with a soft cloth or feather duster only. Do not polish or allow to get wet.

NATURAL COPPER

Raw copper with a lightly brushed, non-directional finish that is unwaxed and unlacquered. Over time, the material will age and patina to a range of tones affected by many factors, including time, touch, climate, and exposure to the elements. Suitable for interior and exterior environments. CARE: Clean with a soft cloth.

BRONZED COPPER

Starting with a matte copper surface, oxidizers are applied to darken the copper to a deep brown-black. Over time the patina will develop organically into a range of tones affected by many factors, including time, touch, climate, and exposure to the elements. Wax can be added to preserve the initial color. Suitable for interior and exterior environments. CARE: Clean with a soft cloth.

OXIDIZED COPPER

Starting with a natural copper base, oxidizers and heat are applied simultaneously to accelerate the development of protective verdigris in a range of green and white tones. Over time the patina will continue to develop organically into a range of tones affected by many factors, including time, touch, climate, and exposure to the elements. Suitable for interior and exterior environments. CARE: Clean with a soft cloth.

BRUSHED BRONZE COPPER

Starting with a satin copper base, a bronzed copper patina is applied directionally for a brushed appearance. The resulting finish is matte with some copper highlights and will reduce variation in the surface finish. Sealed with a clear satin lacquer to preserve the finish. Suitable for interior and exterior environments. CARE: Clean with a soft cloth.

LEADED COPPER

A mottled silver lead coating applied over copper resulting in a durable and corrosion-resistant finish. Over time the finish will patinate to a grayish-white tone affected by many factors, including time, touch, climate, and exposure to the elements. Suitable for interior and exterior environments. CARE: Clean with a soft cloth.

BLACK LACQUER

A colored acrylic spray lacquer in a rich black color with a satin finish. Applied over a copper base. Suitable for interior and exterior environments. CARE: Clean with a soft cloth.

BRONZE LACQUER

A colored acrylic spray lacquer in a historically inspired brown tone carefully selected to match our signature Bronzed Copper patina with a satin finish. Applied over a copper base. Suitable for interior and exterior environments. CARE: Clean with a soft cloth.

SCOFIELD WHITE TOLE

A delicately painted white finish applied by hand over tin with visible brush strokes. White Tole uses a Benjamin Moore premium metal-safe paint. Suitable for interior use only. CARE: Regularly use a soft, dry cloth to gently wipe the fixture clean. Use mild soap and a damp cloth or use Windex to remove stubborn fingerprints or stains. Wipe dry.

SCOFIELD YELLOW GOLD LEAF

Hand-applied 23 karat yellow/white gold leafing. CARE: Clean with a soft cloth and maintain with periodic feather dusting. Use no abrasive cleaners.

SCOFIELD WHITE GOLD LEAF

Hand-applied 23 karat yellow/white gold leafing. CARE: Clean with a soft cloth and maintain with periodic feather dusting. Use no abrasive cleaners.

Custom finishes are available upon request.

PAINT SELECTIONS

All wooden Scofield details are painted with casein paint, using rich, historic, durable colors that do not fade.
All metal details are painted with equivalent colors of metal-safe paint.

AGED TIN & BARN RED

A rich variegated black-brown tin finish paired with wooden components painted in historic and fade-resistant Old-Fashioned Milk Paint or tin components painted with Benjamin Moore premium metal-safe paint. Suitable for interior use only. CARE: Clean with a soft cloth.

AGED TIN & MUSTARD

A rich variegated black-brown tin finish paired with wooden components painted in historic and fade-resistant Old-Fashioned Milk Paint or tin components painted with Benjamin Moore premium metal-safe paint. Suitable for interior use only. CARE: Clean with a soft cloth.

AGED TIN & SNOW WHITE

A rich variegated black-brown tin finish paired with wooden components painted in historic and fade-resistant Old-Fashioned Milk Paint or tin components painted with Benjamin Moore premium metal-safe paint. Suitable for interior use only. CARE: Clean with a soft cloth.

AGED TIN & SEA GREEN

A rich variegated black-brown tin finish paired with wooden components painted in historic and fade-resistant Old-Fashioned Milk Paint or tin components painted with Benjamin Moore premium metal-safe paint. Suitable for interior use only. CARE: Clean with a soft cloth.

AGED TIN & SOLDIER BLUE

A rich variegated black-brown tin finish paired with wooden components painted in historic and fade-resistant Old-Fashioned Milk Paint or tin components painted with Benjamin Moore premium metal-safe paint. Suitable for interior use only. CARE: Clean with a soft cloth.

AGED TIN & FEDERAL BLUE

A rich variegated black-brown tin finish paired with wooden components painted in historic and fade-resistant Old-Fashioned Milk Paint or tin components painted with Benjamin Moore premium metal-safe paint. Suitable for interior use only. CARE: Clean with a soft cloth.

AGED TIN & LEXINGTON GREEN

A rich variegated black-brown tin finish paired with wooden components painted in historic and fade-resistant Old-Fashioned Milk Paint or tin components painted with Benjamin Moore premium metal-safe paint. Suitable for interior use only. CARE: Clean with a soft cloth.

AGED TIN & TAVERN GREEN

A rich variegated black-brown tin finish paired with wooden components painted in historic and fade-resistant Old-Fashioned Milk Paint or tin components painted with Benjamin Moore premium metal-safe paint. Suitable for interior use only. CARE: Clean with a soft cloth.

AGED TIN & PITCH BLACK

A rich variegated black-brown tin finish paired with wooden components painted in historic and fade-resistant Old-Fashioned Milk Paint or tin components painted with Benjamin Moore premium metal-safe paint. Suitable for interior use only. CARE: Clean with a soft cloth.

Custom finish colors are available upon request.

WARRANTY

We will repair or replace at our discretion any fixture found to be structurally defective for a period of 5 years. This excludes all electrical components, changes to finish and glass. Fixture must be returned to our shop for all warranty related claims.

BRACKETS, HOOKS & CHAIN



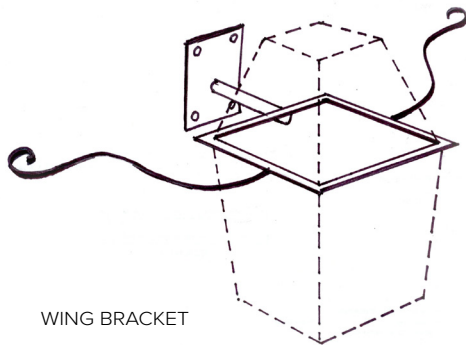
STRAIGHT ARM BRACKET
8", 10", 12" AND 14" DEPTHS AVAILABLE.
MOUNTED ON A 4" X 5" BACKPLATE



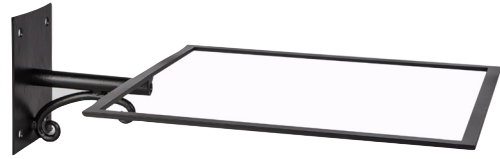
GOOSENECK BRACKET
9 1/2" AND 11 1/2" DEPTHS AVAILABLE.
MOUNTED ON A 4" X 5" BACKPLATE
WITH INSET J-BOX COVER



FAUX BRACKET
4" DEPTH
MOUNTED ON A 3 1/8" X 4 1/2"
BACKPLATE



WING BRACKET
34" WIDE AND 45" WIDE AVAILABLE.
MOUNTED ON A 4 5/8" X 5" BACKPLATE



LANTERN YOKE BRACKET
MOUNTED ON A 4.5" X 5.5" BACKPLATE



BRONZED
CHAIN



AGED TIN
CHAIN



HANGING
HOOK



BRONZE PIER MOUNT
OVERALL MEASUREMENT OF 6" X 6" X 5 5/8"



STEEL PIER MOUNT
OVERALL MEASUREMENT OF 6" X 6" X 3 1/4"

CANDLESLEEVES, GLASS & MIRROR



WHITE WAX DRIPLESS IVORY WAX DRIPLESS NATURAL WAX DRIPLESS



WHITE CARDBOARD



IVORY DRIPLESS POLYRESIN



IVORY WAX DRIP NATURAL WAX DRIP

2, 3.5, OR 6 WATT FILAMENT VINTAGE LED 2700K BULBS RECOMMENDED FOR BEESWAX CANDLESLEEVES



STRAIGHT CHIMNEY



CURVED CHIMNEY



PEWTER REFLECTOR



ANTIQUED MIRROR

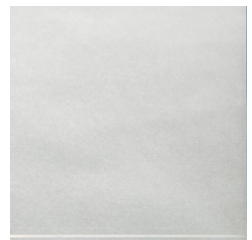
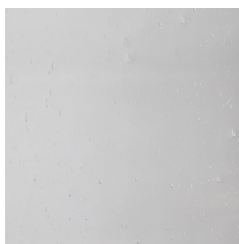


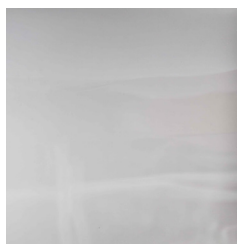
PLATE MIRROR



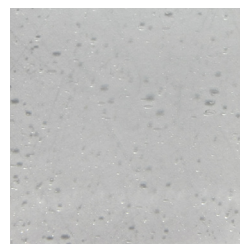
PLATE GLASS



SEEDED GLASS



RESTORATION GLASS



OPAL GLASS



FROSTED GLASS

The subtle distortions, wavy imperfections, and embedded bubbles of mouth-blown restoration glass and antiqued mirror are unique to each pane.